

DIRECTED BY JEROME SOLBERG



EUGENE IONESCO'S
EXIT THE KING

ACTORS ENSEMBLE OF BERKELEY has been around the block (and just around the corner from you) since 1957, making us the longest running stage company in Berkeley. We began with seven UC Berkeley alumni from the World War II era. Their love of acting gave birth to a tradition that began with four plays in 1957, which were initially performed in a neighbor's basement. In 1965, AE began performing at the Live Oak Theatre — and has ever since.

Our mission is to enrich, entertain and improve our community through fascinating theatrical works. With social consciousness and an ensemble approach, we provide area residents with opportunities to attend, participate in and be helped through theatre. Our shows will be affordable, our opportunities enjoyable, and our community impact felt year-round.

As Berkeley's only true community theatre company, we depend on our volunteers to bring their energy and creative vision to each play we produce.

If you would like to volunteer in our theatre, give us a call or send us an email! We'd love for you to play a part in our next show!

Contact us at:

Email: info@aeofberkeley.org

Phone: 510-841-5580

www.aeofberkeley.org

BOARD OF DIRECTORS: Alan Barkan, Eric Carlson, David Cohen, Maureen Coyne, Jose Garcia, Bob Gudmundsson, Maggie Gudmundsson, Bill Martinelli, Roger Schrag, Jerome Solberg, Stanley Spenger, Kim Stewart

Eugene Ionesco's
EXIT THE KING

Directed by Jerome Solberg

CAST

The King.....	Norman Macleod
Queen Marie.....	Satya Soleil Starr
Queen Marguerite.....	Beth Chastain
The Doctor.....	Alecks Rundell
Juliette.....	Melanie Curry
The Guard.....	Jose Garcia

CREW

Director.....	Jerome Solberg
Set Design.....	Shu Ping Guan
Set Construction.....	Bob Gudmundsson
Assistant Set Design.....	Phoebe W. Lam
Costume Design.....	Helen Slomowitz
Light Design.....	Alecks Rundell
Sound Design.....	Phil Ramey
Sound/Light Op.....	Lucas Bastien, Jessica Palacios, Thomas Petithuguenin
Producer.....	Roger Schrag
Stage Manager.....	Jose Garcia
Assistant Stage Manager.....	Ezodin Towfigh
Publicity.....	Eric Carlson
Consultant.....	George Marchi
Lobby Display.....	Martha Luehrmann

Please note that there is no intermission.

Presented by special arrangement with Samuel French, Incorporated

DIRECTOR'S NOTE

The possibility of including an Ionesco play in our 2009 season was brought up early on in the selection process. *Rhinoceros*, *The Chairs*, and *The Bald Soprano* have been performed regularly over the years, and we wanted to look deeper into his back-catalog. We were drawn to *Exit the King* initially by the timeliness of its subject matter and its status as one of the four "Berenger" plays (of which the second was *Rhinoceros*), and found ourselves entranced by the depth, humor, and originality of the language. As myself, the actors, and the production team have spent these weeks putting shape to Ionesco's words, I continue to draw inspiration from the insight the script has into mortality. Like the King, we absurdly think death will come "when I want to, when I have chosen, when I have the time", whereas it always chooses us on its own terms. Perhaps Ionesco's reminder of the finiteness of our reality will lead us to a more meaningful present.

THANKS



STAGECRAFT STUDIOS
1854 Alcatraz Avenue
Berkeley, CA 94703
Phone (510) 853-4424 • Fax (510) 853-9217
eStageCraft.com • StageMax1@aol.com



THEATRICAL LIGHTING & COSTUMES SINCE 1928
15% OFF ALL COSTUME RENTALS
with this flyer only
Coupon good through October 31st 2008

CAL SHAKES
CALIFORNIA SHAKESPEARE THEATER

CAST AND CREW



BETH CHASTAIN (Queen Marguerite) has been performing in the Bay Area for the past nine years. Her favorite role—for which she received a Shellie Award—was that of her sons' mother in *Christenings* (Galetean Players 2008). She is thankful for her husband Paul and his lovely dinners at the end of a long night of rehearsal!

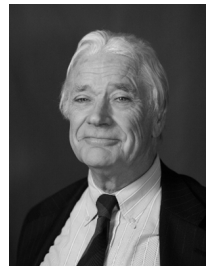
MELANIE CURRY (Juliette) has appeared in several Actors Ensemble productions, including *Present Laughter* and *Twelfth Night*. She studied with Ed Hooks before he moved to Chicago. When not rehearsing plays, she edits a magazine, raises a daughter, and contemplates grad school. Why would anyone do that?



JOSE GARCIA (The Guard, Stage Manager) has performed on stage while stage managing Actors Ensemble's 2008 productions *The Matchmaker*, *Uncle Vanya*, and *Barefoot In The Park*. His favorite roles have been the teacher in *A Dream Play* and the ambassador in *Rosencrantz & Guildenstern Are Dead*. He will next stage manage Actors Ensemble's production of *LUV*.

SHU PING GUAN (Set Designer) is proud to be in this production with all these talented people. She is happy to see that that architecture degree came in handy. In her free time, Shu Ping likes to paint the town in beautiful hues.

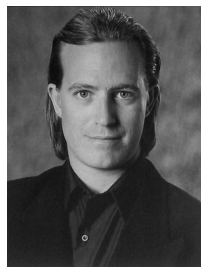
NORMAN MACLEOD (King Berenger the First) trained as an actor with York Repertory Theatre in England. Since 1965 he has performed in numerous local productions including his appearance with Actors Ensemble as Sir Toby Belch in *Twelfth Night*. Norman thanks his muse and spouse, Dianne, for her support and forbearance during his theatrical endeavors.



Actors Ensemble Celebrates

PHIL RAMEY (Sound Designer) is a recent graduate of UC Santa Cruz's excellent Theater Arts department, and is very excited to work with Actors Ensemble. Some of his recent work includes world premieres of Jim Bierman's *Election Day* and Subject B's *Confession*, as well as a production of Martin McDonagh's *The Pillowman* in the Barn Theater at UCSC.

ALECKS RUNDELL (The Doctor, Lighting Designer) is excited to be working with Actors Ensemble in his stage debut in the Bay Area. He received his Theatre Arts degree from Reed College, Portland, OR. He completed his thesis on Fractals and Chaos Theory as applied to Theatre, and still pursues the beauty of fractals. He thanks his parents, Jeanne and Richard Rundell; and sends his love to Priscilla.



ROGER SCHRAG (Producer) is having a great time producing his first play. Although not yet seen on stage, he enjoys maintaining the Actors Ensemble website and mailing lists, and doing all those little things a theatre group needs done. When not helping out at the theatre, Roger likes to hike, swim, travel, and play Go.

HELEN SLOMOWITZ (Costume Designer) is thrilled to be working with Actors Ensemble again and having the opportunity to collaborate with Jerome and the cast. Helen is currently working in wardrobe for *Tony n' Tina's Wedding* in San Francisco and has worked locally with other theatres. Helen has also had the marvelous opportunity to work in films locally and in Los Angeles.

JEROME SOLBERG (Director) is making his directing debut with Actors Ensemble. He has performed in several AE productions including *Working*, *Twelfth Night*, and *Uncle Vanya*. Mr. Solberg has also had a hand in designing music for past shows including *Hedda Gabler*, as well as donning a producer's hat in several shows for AE—among them *True West* and *Rosencrantz and Guildenstern are Dead*. He dedicates this show to his parents, John and Mary Solberg.



SATYA SOLEIL STARR (Queen Marie) has been a theatre actress for 20 years. Most recently, she co-produced and performed in Ensler's, *The Vagina Monologues*, raising \$5000 for a local rape crisis agency, and played the role of Lady Macbeth for Killer Bee Productions' *Macbeth*. Satya is a mother, poet, and dancer beyond theatre actress.

**ENJOYED TONIGHT'S PERFORMANCE?
NOT A SEASON TICKET HOLDER?**

Become an Actors Ensemble subscriber for the rest of the 2009 season at a discounted price! Simply mail in this coupon along with \$28 per subscription and you'll get tickets to the following productions:

• • •

LUV by Murray Schisgal **April 23 through May 23**

WONDERFUL TOWN by Comden and Green **July 17 through August 15**

AS IT IS IN HEAVEN by Arlene Hutton **October 23 through November 21**

• • •

What a deal! Make checks payable to
Actors Ensemble of Berkeley

Mail to
P.O. Box 663, Berkeley, CA 94701

Learn more about the 2009 season and subscriber benefits at
www.aeofberkeley.org

